



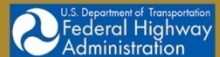
**PYRAMID  
HIGHWAY**



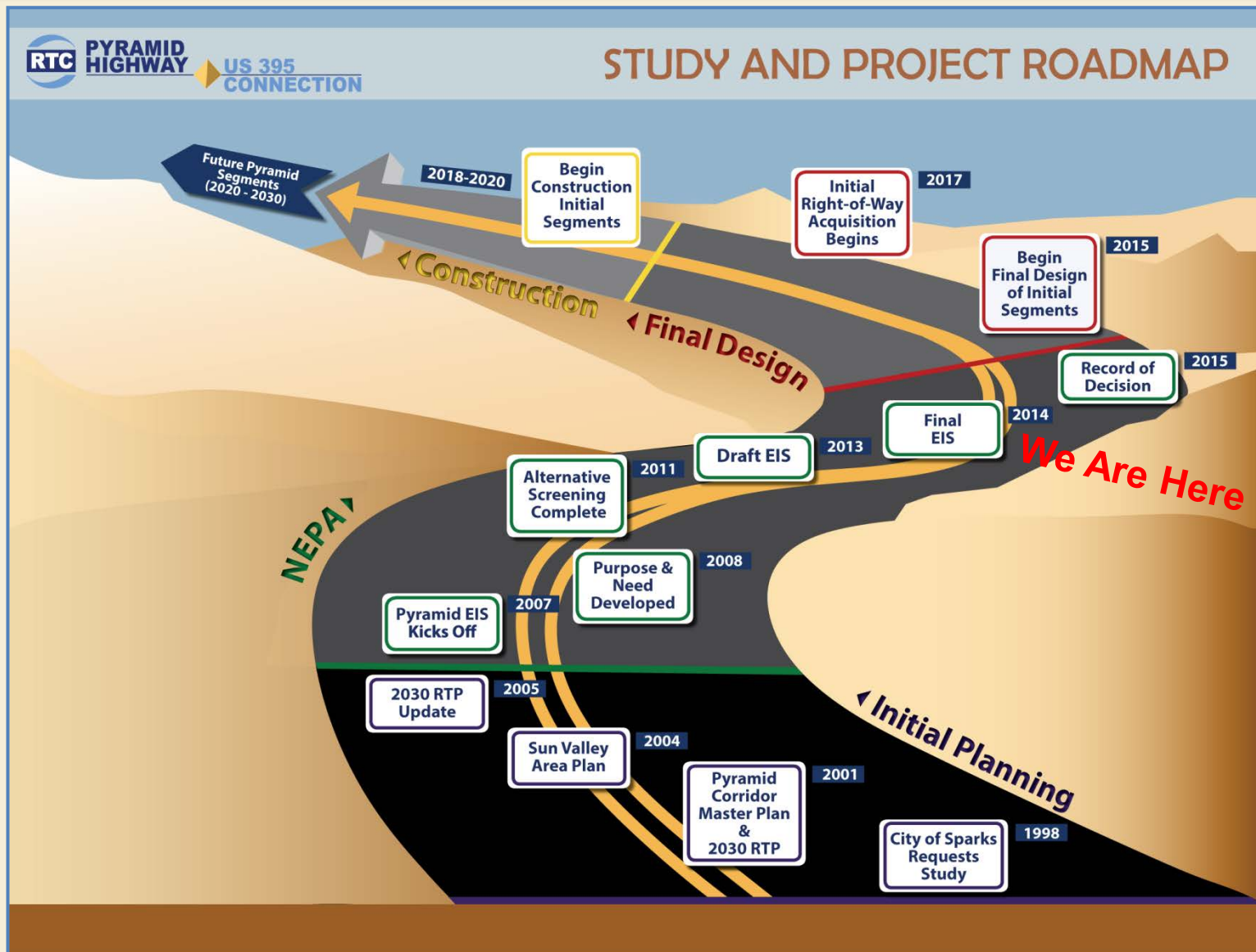
**US 395  
CONNECTION**

# Sparks City Council Presentation

## April 2014



# Where Are We?





# Pyramid/US 395 Connector Overview and DEIS Alternatives



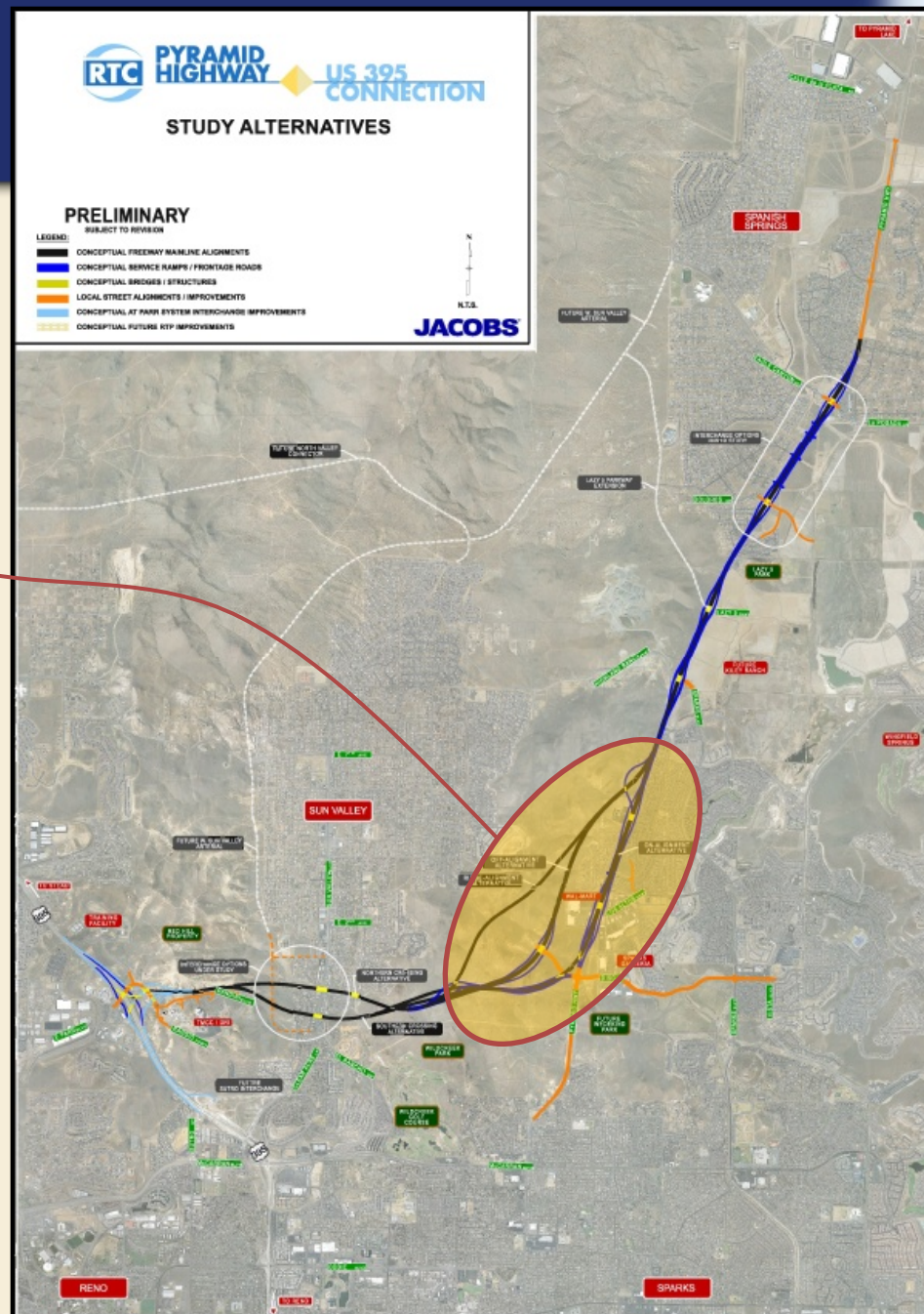
- Six-Lane Freeway from Disc Drive to Calle de la Plata and Six-Lane Freeway from Pyramid to US 395
- Arterial widening:
  - Disc Drive from Pyramid to Vista Blvd.
  - Pyramid from the Connector to Queen Way
- Interchanges at the following:
  - US 395, Sun Valley, Disc Drive, Sparks Blvd., Lazy 5 Pkwy., Dolores Drive, and Eagle Canyon Drive



# Alternatives Moving Forward

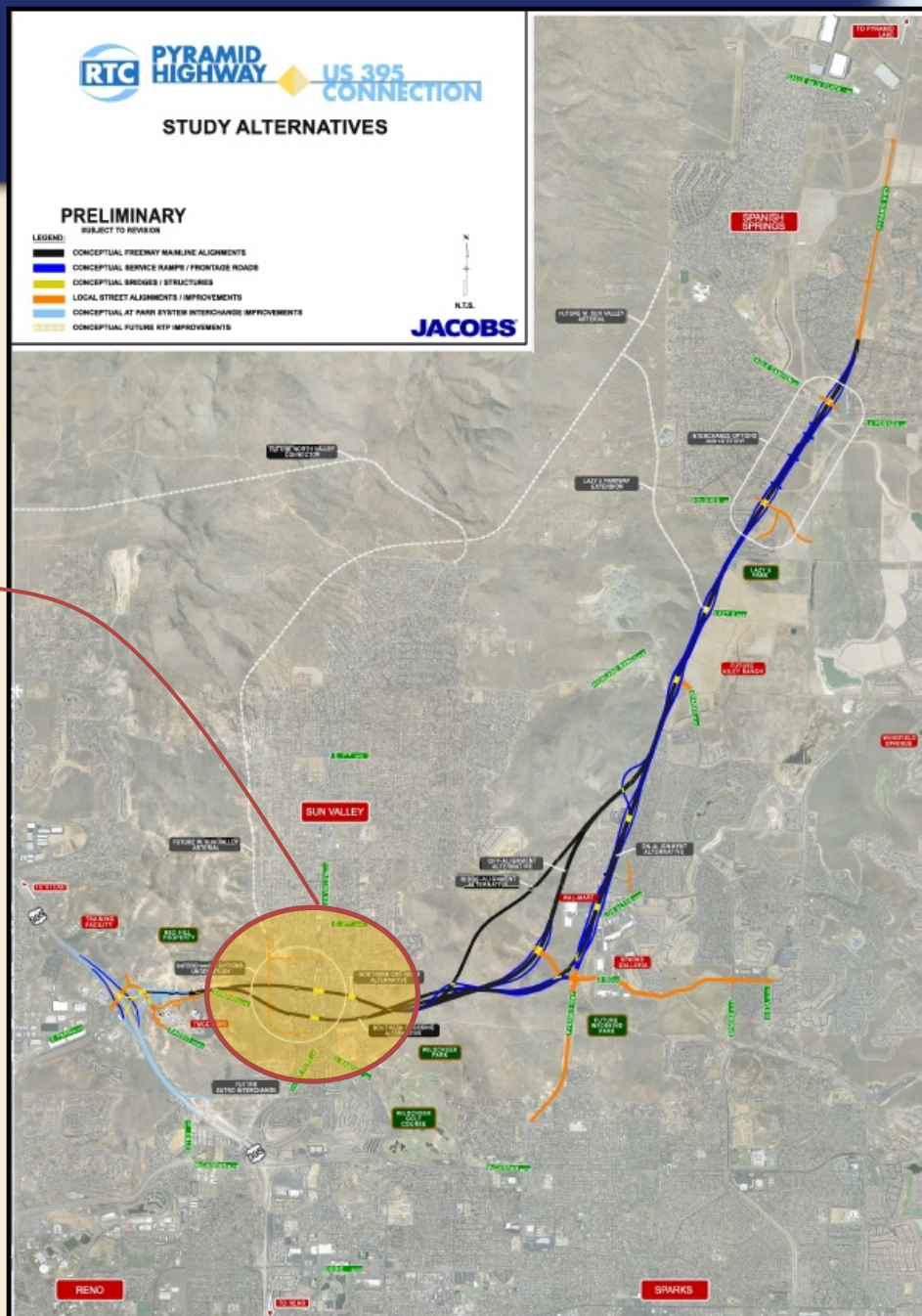
## Pyramid Corridor: Three Alignment Alternatives between Disc Drive and Sparks Blvd

- “On”
- “Off”
- “Ridge”





# Alternatives Moving Forward



## Sun Valley Area:

### Two Alignment Alternatives

- “North”
- “South”

### Two Interchange Alternatives

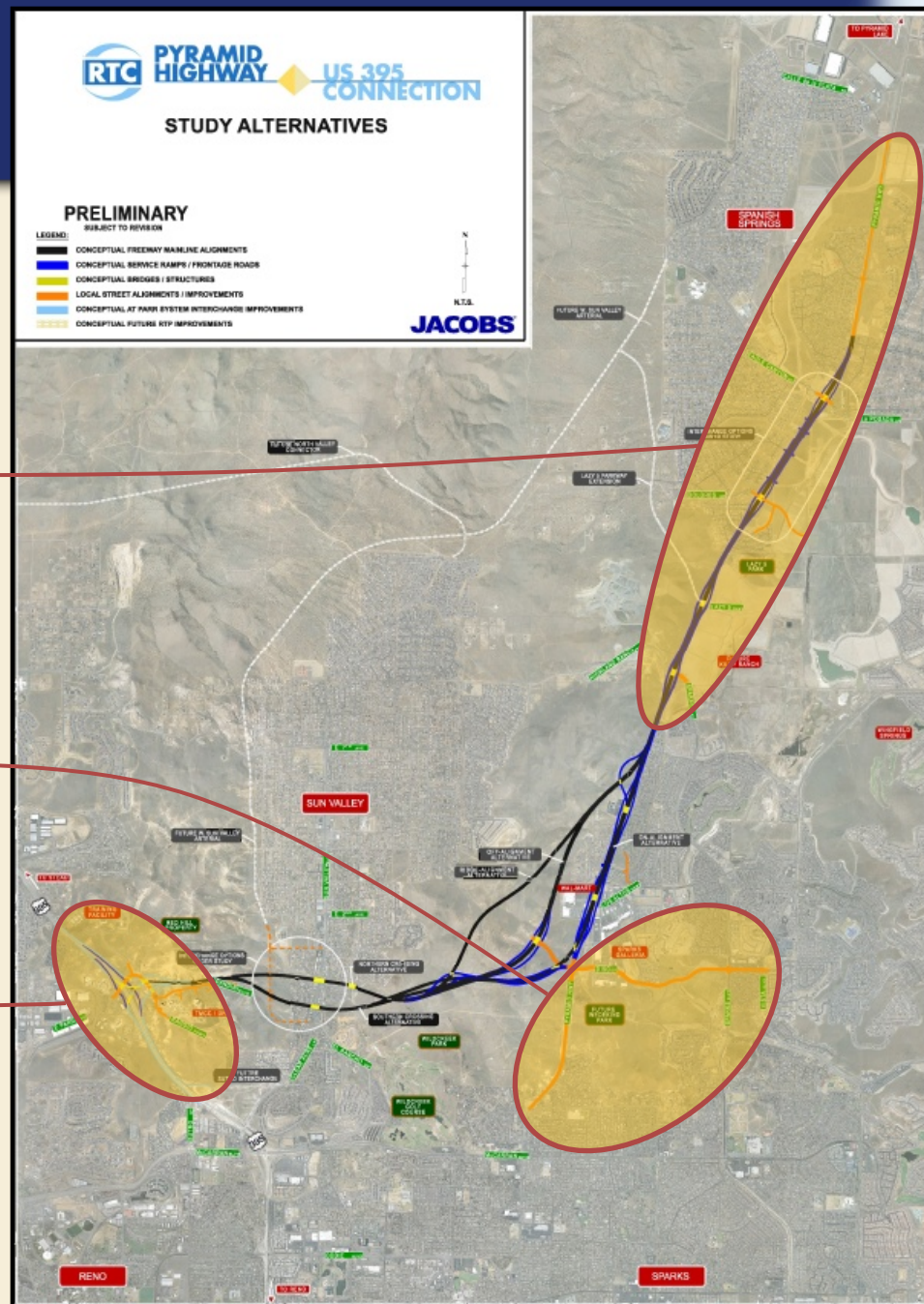
- “at SVB”
- “west of SVB”

# Elements Common To All

6 lane freeway from  
Sparks Blvd. to Calle  
de la Plata:

Widen Disc Dr. and  
Pyramid Hwy. to  
Queen Way:

US 395 and Parr  
Blvd. Interchange  
improvements:







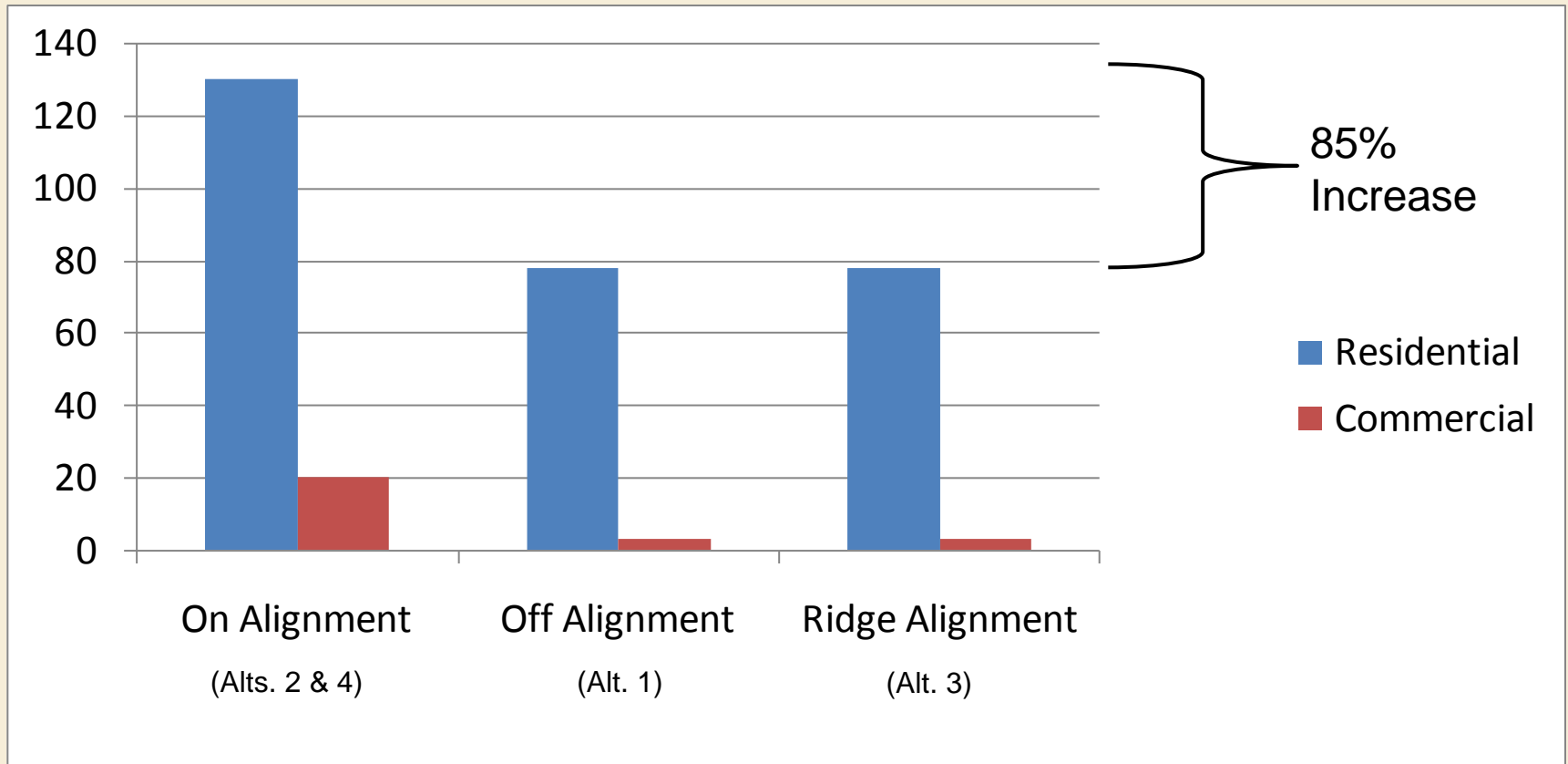
- ☐ Hearings and Public Comment period occurred in Fall 2013
- ☐ Two public hearings had approximately 230 attendees
- ☐ A total of 63 comments were received
- ☐ General comment themes:
  - ☐ Concerns over property acquisition
  - ☐ Traffic (congestion, changes, noise, etc.)
  - ☐ Changes to residences adjacent to alignments

*Findings – There is no clear preference for or against any particular alternative or alternative segment.*

# Right-of-Way and Relocations: Pyramid Alignments

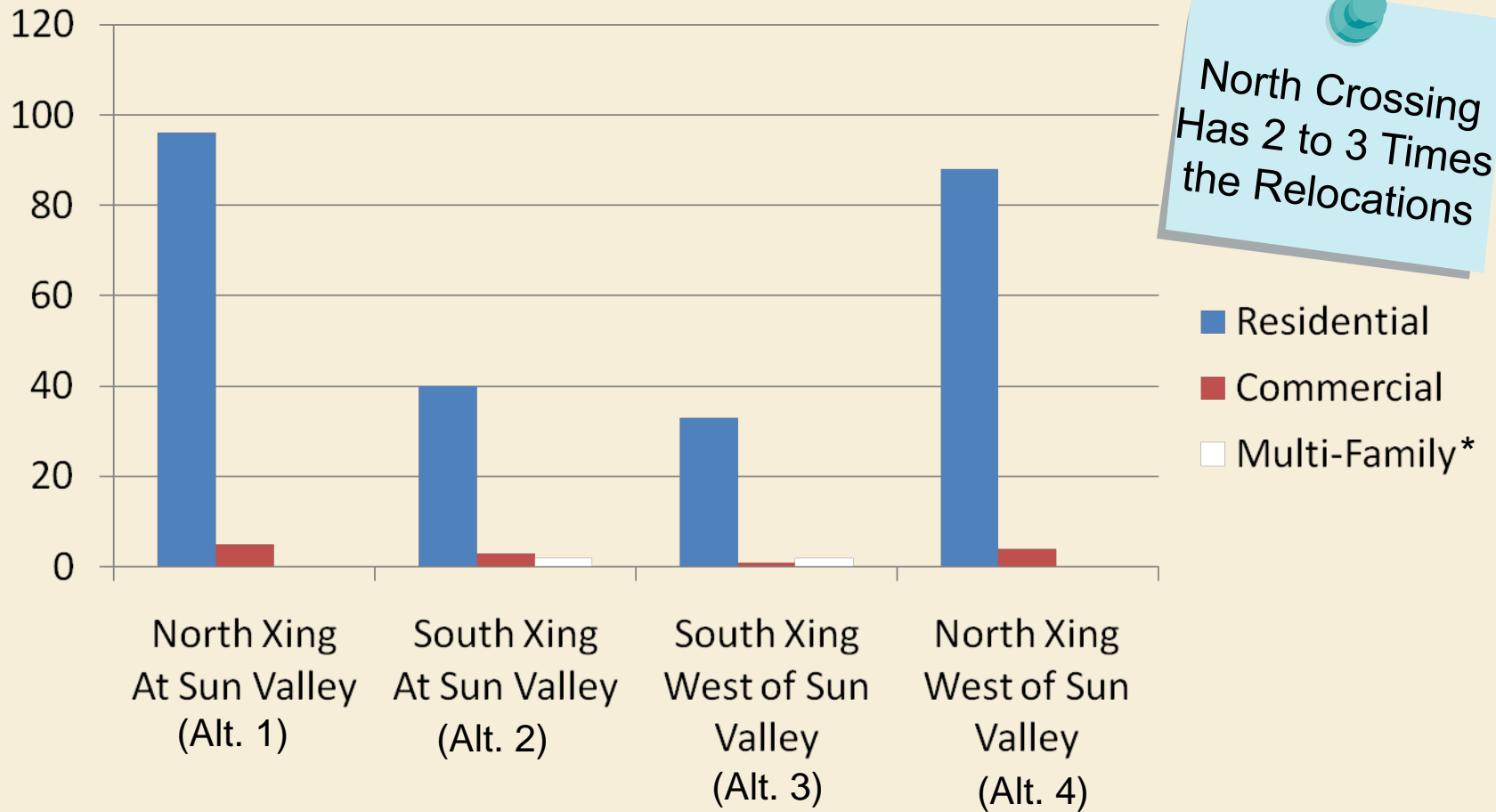


- Total relocations range from 81-150 depending on alignment



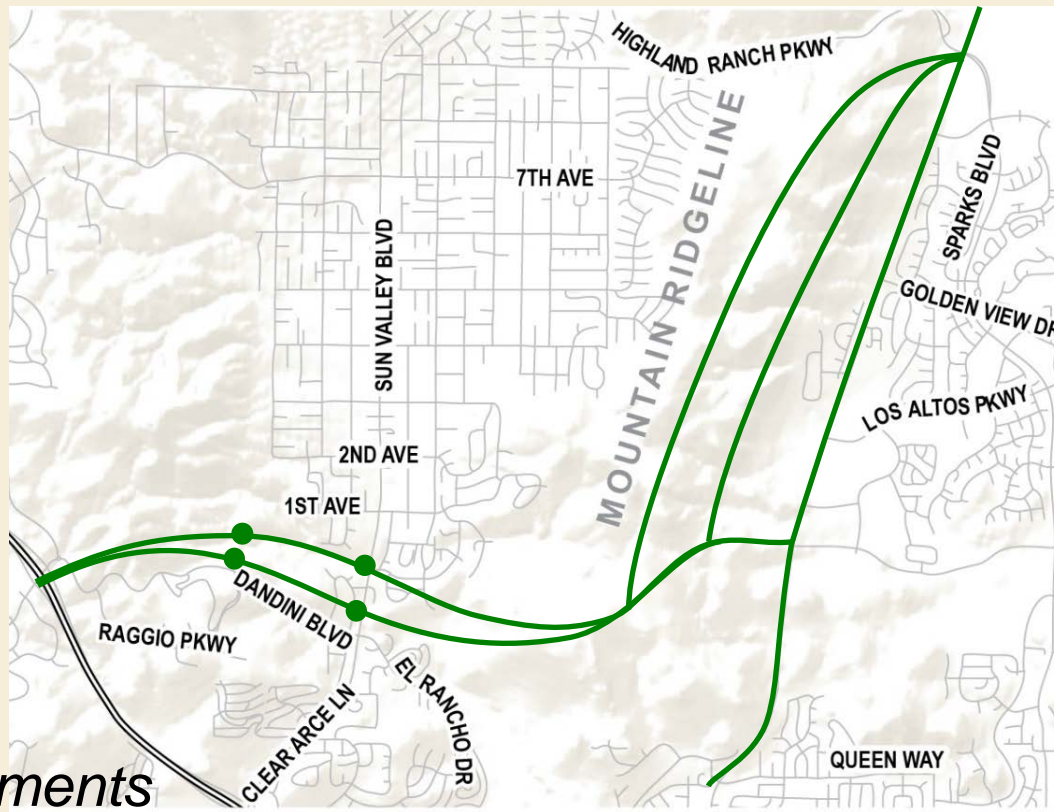


# Right-of-Way and Relocations: Sun Valley Options



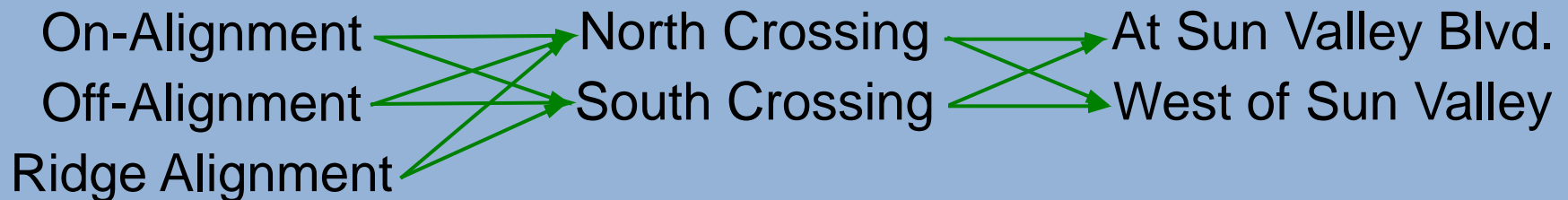
\* Southern crossings would relocate two multi-family apartment units containing 120 units total. This was counted as two units in totals shown.

# Steps to Preferred Alternative



## *Alternative Elements*

### Pyramid Alignments   Sun Valley Crossings   Sun Valley Interchange

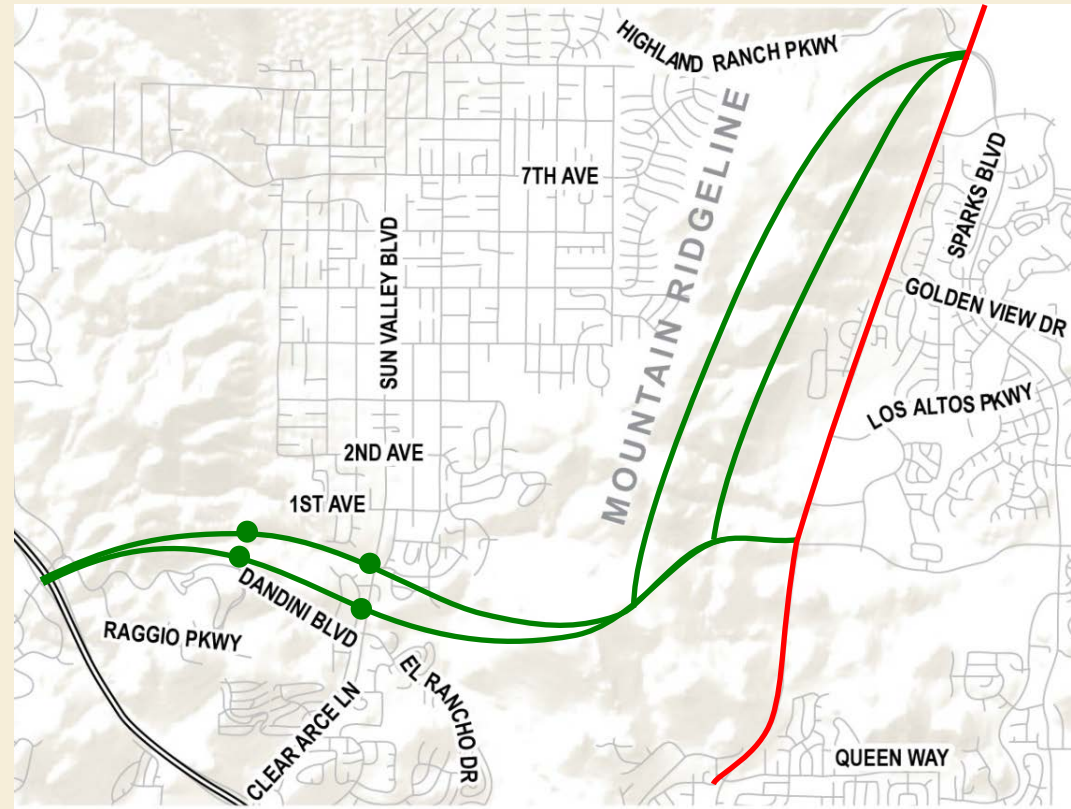


# Steps to Preferred Alternative



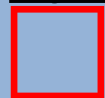
## Step 1

With 85% more relocations and no major performance benefits, the “On Alignment” is not preferred compared to other Pyramid Alignments



## *Alternative Elements*

### Pyramid Alignments   Sun Valley Crossings   Sun Valley Interchange



On-Alignment

Off-Alignment

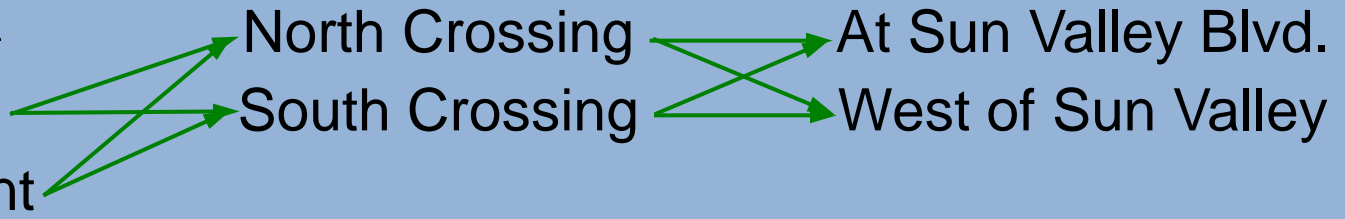
Ridge Alignment

North Crossing

South Crossing

At Sun Valley Blvd.

West of Sun Valley



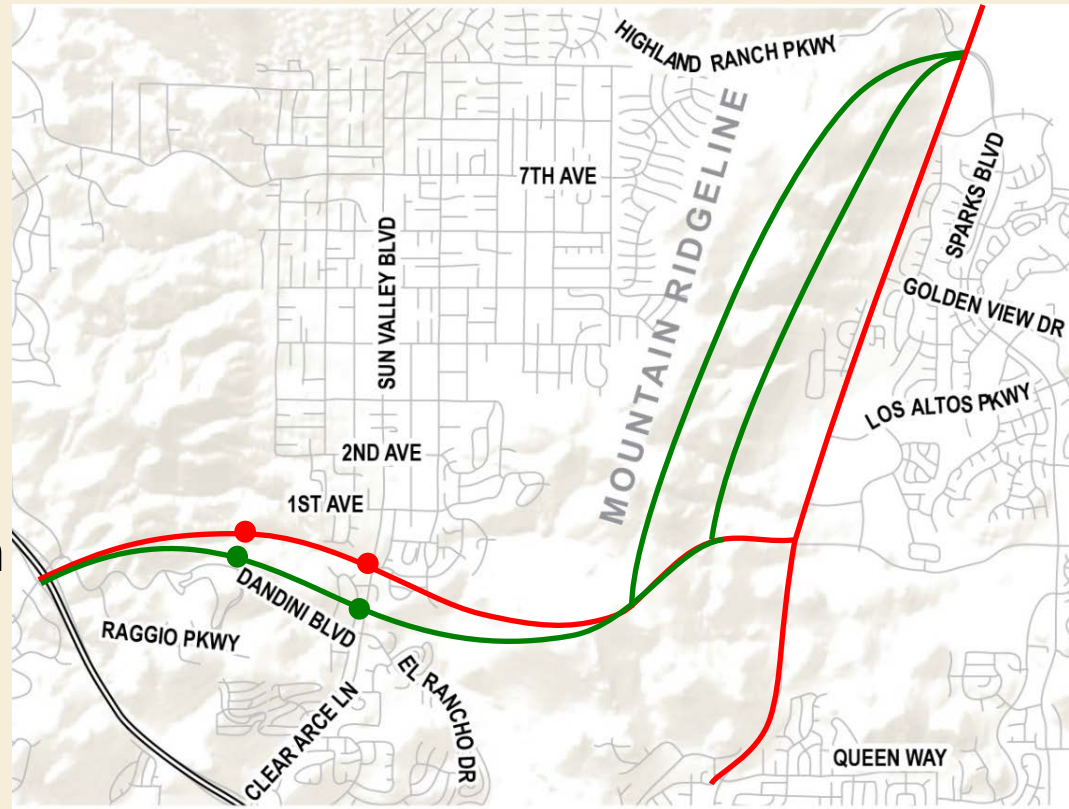


# Steps to Preferred Alternative



## Step 2

With greater potential relocations and impacts to established neighborhoods and no major performance benefits, the “North” crossing is less desirable than the “South” crossing through Sun Valley



## *Alternative Elements*

### Pyramid Alignments   Sun Valley Crossings   Sun Valley Interchange



On-Alignment



North Crossing

Off-Alignment

South Crossing

At Sun Valley Blvd.

West of Sun Valley

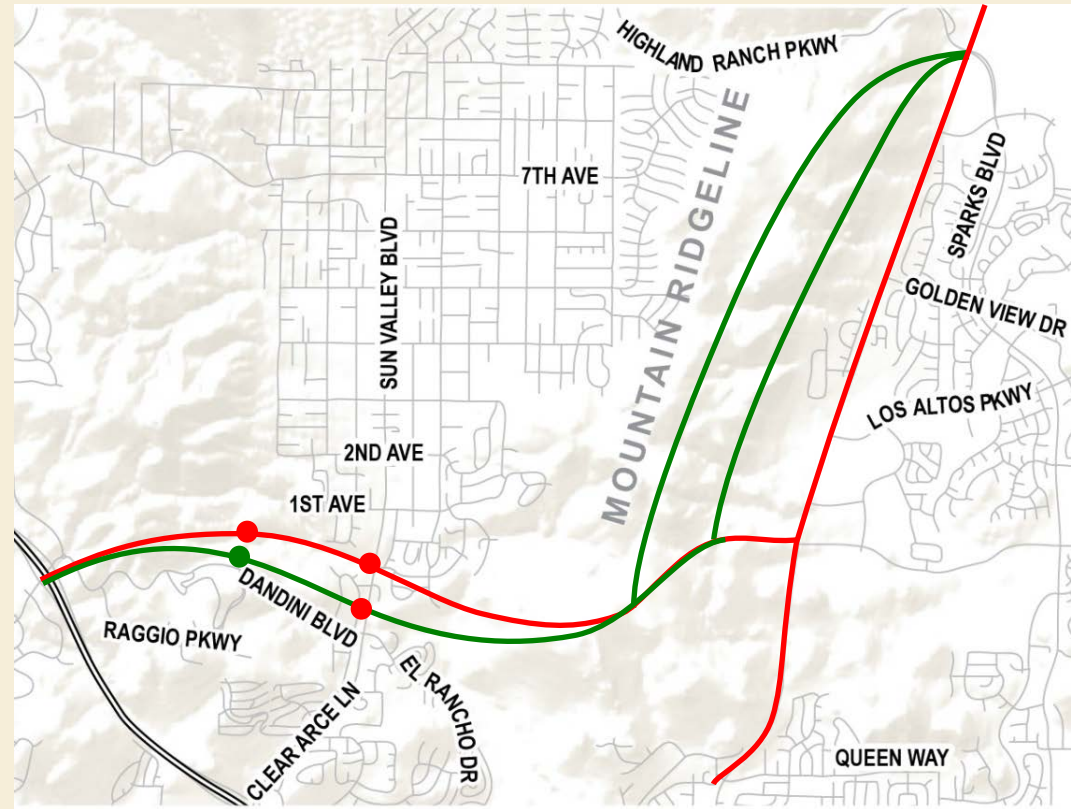
Ridge Alignment

# Steps to Preferred Alternative



## Step 3

The interchange “at Sun Valley Blvd.” has 9 additional relocations, is in close proximity to the existing Dandini/El Rancho Intersection and results in approx. ½ million CY excess earthwork compared to the interchange “west of Sun Valley Blvd.”



## *Alternative Elements*

### Pyramid Alignments    Sun Valley Crossings    Sun Valley Interchange

☐ On-Alignment

☐ North Crossing

☐ At Sun Valley Blvd.

Off-Alignment

South Crossing

West of Sun Valley

Ridge Alignment

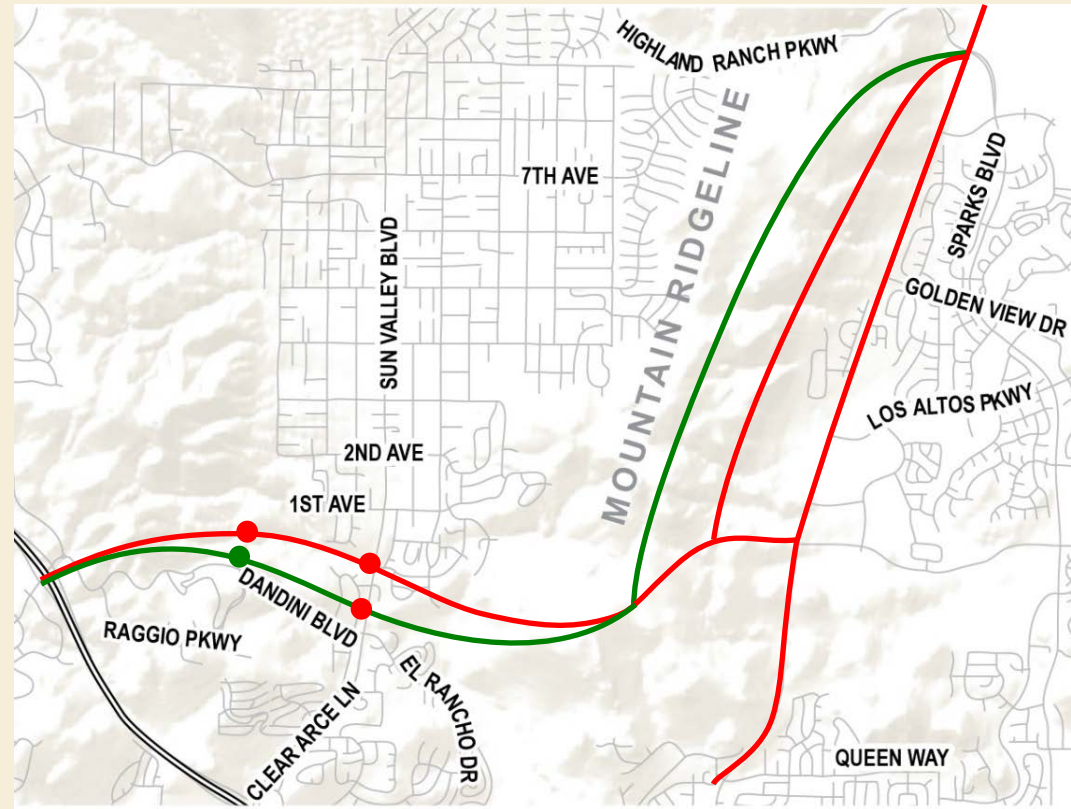


# Steps to Preferred Alternative



## Step 4

The “Off Alignment” has greater visual impacts than the Ridge Alignment and in combination with the Sun Valley options results in approx. 1 million CY more of excess earthwork



## *Alternative Elements*

### Pyramid Alignments

- ☐ On-Alignment
- ☐ Off-Alignment
- ☐ Ridge Alignment

### Sun Valley Crossings

- ☐ North Crossing
- ☐ South Crossing

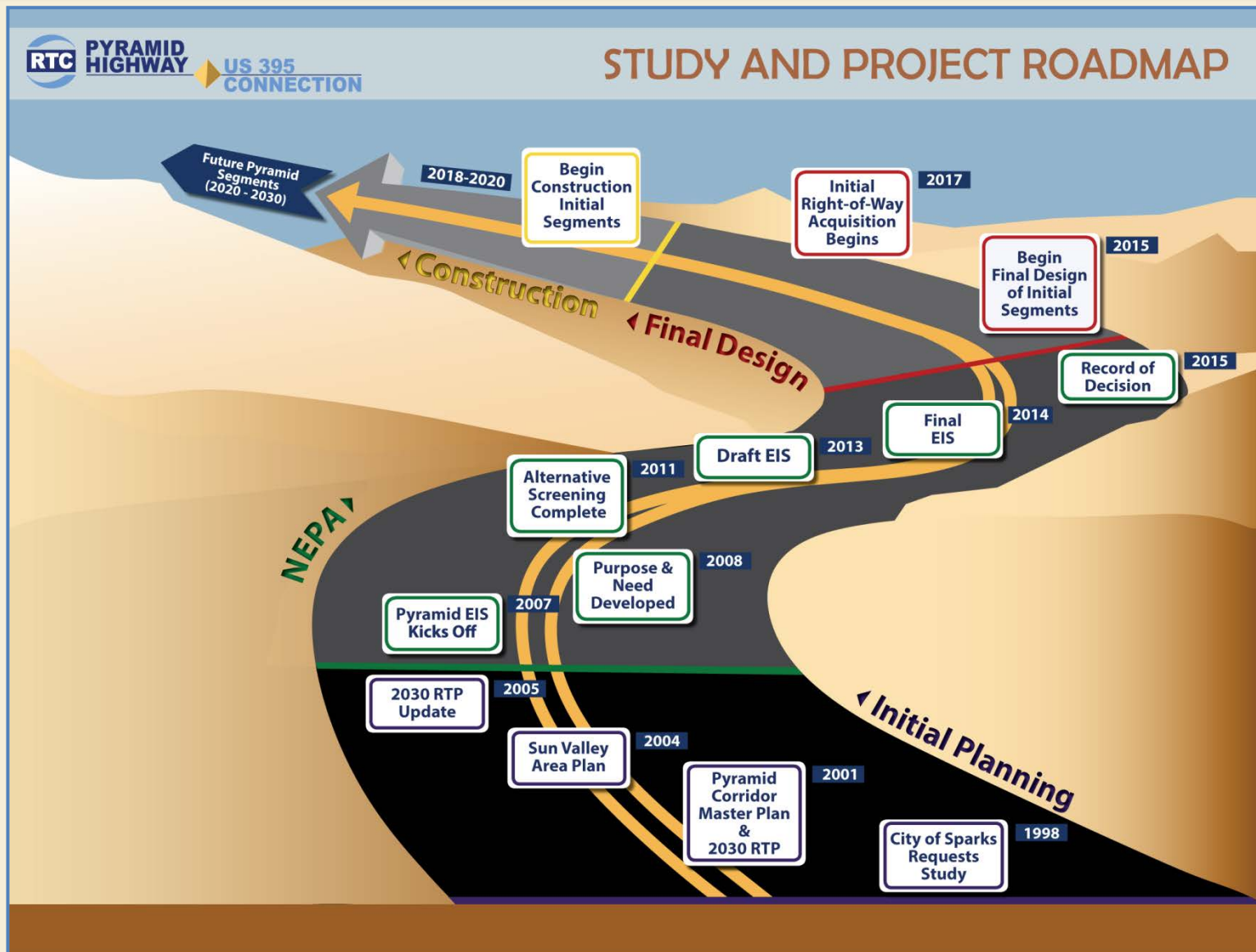
### Sun Valley Interchange

- ☐ At Sun Valley Blvd.
- ☐ West of Sun Valley





# Next Steps



Thank you!



**Doug Maloy, P.E., Project Manager**

Regional Transportation Commission of Washoe County

1105 Terminal Way, Suite 108, Reno, NV 89502

(775) 335-1865 Fax: (775) 348-0170

E-mail: [dmaloy@rtcwashoe.com](mailto:dmaloy@rtcwashoe.com)